

PAN-STEEL™ System

The *PAN-STEEL™* System provides a strong, durable method of bundling, identifying and fastening, which can be used in virtually all indoor, outdoor and underground (including direct burial) applications, where severe environmental conditions exist. The ties are designed for use in critical applications where strength, vibration, radiation, weathering, corrosion and temperature extremes are a factor.



- **High strength**
- **Long life**
- **Weather resistant**
- **Chemical resistant**
- **Temperature extremes**
- **Radiation resistant**
- **Permanent identification**

PANDUIT offers unique products to meet customer needs:

Metal Locking Ties — Excellent performance in any environment

Nylon 11 Selectively Coated Ties — Strength of steel, protection of nylon

WAVE-TY™ Stainless Steel Ties — Maintains a high tension grip on non-resilient objects

Fully Coated Ties — Polyester coated for additional bundle protection

Strapping — Reduces installation time and leaves no sharp edges

Mounts and accessories — Used with *PAN-STEEL™* ties and straps to speed and simplify mounting

Permanent identification products — Custom identification for harsh environments

State-of-the-art tooling — Speed installation and lower installed cost

Enhanced PAN-STEEL™ Self-Locking Stainless Steel Cable Ties



- Strong, durable method of bundling and fastening
- Can be used in virtually all indoor, outdoor and underground (including direct burial) applications
- Well suited for network bundling of data and power cables
- Fully rounded edges and exclusive lead-in design
- Provides ultimate support for network cables
- Available in 316 material for the most corrosive environments



Part Number	Max. Bundle Diameter	Length**	Min. Loop Tensile Strength*	Min. Bundle Diameter	Width	Thickness	Recommended PANDUIT Installation Tool***	Std. Pkg. Qty.	Std. Ctn. Qty.
	mm		N	mm					

AISI 304 Stainless Steel — For General Purpose

Standard Cross Section

MLT1S-CP	25	127	890	12.7	4.6	0.25	GS4MT, HTMT, PPTMT, ST2MT or ST3MT	100	500
MLT2S-CP	51	201	890	12.7	4.6	0.25		100	500
MLT2S-L	51	201	890	12.7	4.6	0.25		50	500
MLT2.7S-CP	69	259	890	12.7	4.6	0.25		100	500
MLT4S-CP	102	362	890	12.7	4.6	0.25		100	500
MLT4S-L	102	362	890	12.7	4.6	0.25		50	500
MLT6S-CP	152	521	890	12.7	4.6	0.25		100	500
MLT8S-CP	203	679	890	12.7	4.6	0.25		100	500
MLT10S-CP	254	838	890	12.7	4.6	0.25		100	500
MLT12S-Q	304	998	890	12.7	4.6	0.25		25	125
MLT14S-Q	355	1156	890	12.7	4.6	0.25		25	125
MLT15S-Q	380	1250	890	12.7	4.6	0.25		25	125

Light-Heavy Cross Section

MLT2LH-LP	51	201	1112	12.7	6.4	0.25	GS4MT, HTMT, PPTMT, ST2MT or ST3MT	50	250
MLT4LH-LP	102	362	1112	12.7	6.4	0.25		50	250
MLT6LH-LP	152	521	1112	12.7	6.4	0.25		50	250
MLT8LH-LP	203	679	1112	12.7	6.4	0.25		50	250

Heavy Cross Section

MLT2H-LP	51	201	2000	12.7	7.9	0.25	GS4MT, HTMT, PPTMT, ST2MT or ST3MT	50	250
MLT2.7H-LP	69	259	2000	12.7	7.9	0.25		50	250
MLT4H-LP	102	362	2000	12.7	7.9	0.25		50	250
MLT6H-LP	152	521	2000	12.7	7.9	0.25		50	250
MLT8H-LP	203	679	2000	12.7	7.9	0.25		50	250
MLT10H-LP	254	838	2000	12.7	7.9	0.25		50	250
MLT12H-Q	305	998	2000	12.7	7.9	0.25		25	125
MLT14H-Q	356	1156	2000	12.7	7.9	0.25		25	125

Extra-Heavy Cross Section

MLT4EH-LP	102	434	2670	25.4	12.7	0.25	RT1HT or ST3MT	50	250
MLT6EH-LP	152	594	2670	25.4	12.7	0.25		50	250
MLT8EH-LP	203	754	2670	25.4	12.7	0.25		50	250
MLT10EH-LP	254	912	2670	25.4	12.7	0.25		50	250
MLT12EH-Q	305	1072	2670	25.4	12.7	0.25		25	125
MLT4EH15-LP	102	434	3115	25.4	12.7	0.38		50	250
MLT6EH15-LP	152	594	3115	25.4	12.7	0.38		50	250
MLT8EH15-LP	203	754	3115	25.4	12.7	0.38		50	250
MLT10EH15-LP	254	912	3115	25.4	12.7	0.38		50	250
MLT12EH15-Q	305	1072	3115	25.4	12.7	0.38		25	125

*Per SAE Standard AS23190/3 (formerly MIL).

**Other lengths available, contact customer service.

***For information on installation tools, refer to page 76.

Enhanced PAN-STEEL™ Self-Locking Stainless Steel Cable Ties (continued)



Part Number	Max. Bundle Diameter	Length**	Min. Loop Tensile Strength*	Min. Bundle Diameter	Width	Thickness	Recommended PANDUIT Installation Tool***	Std. Pkg. Qty.	Std. Ctn. Qty.
	mm								
Super-Heavy Cross Section									
MLT4SH-LP	102	434	4005	25.4	15.9	0.38	RT1HT	50	250
MLT6SH-LP	152	594	4005	25.4	15.9	0.38		50	250
MLT8SH-LP	203	754	4005	25.4	15.9	0.38		50	250
MLT10SH-LP	254	912	4005	25.4	15.9	0.38		50	250
MLT12SH-Q	305	1072	4005	25.4	15.9	0.38		25	125
AISI 316 Stainless Steel — For Superior Corrosion Resistance									
Standard Cross Section									
MLT1S-CP316	25	127	890	12.7	4.6	0.25	GS4MT, HTMT, PPTMT, ST2MT or ST3MT	100	500
MLT2S-CP316	51	201	890	12.7	4.6	0.25		100	500
MLT4S-CP316	102	362	890	12.7	4.6	0.25		100	500
MLT6S-CP316	152	521	890	12.7	4.6	0.25		100	500
MLT8S-CP316	203	679	890	12.7	4.6	0.25		100	500
MLT10S-CP316	254	838	890	12.7	4.6	0.25		100	500
Light-Heavy Cross Section									
MLT2LH-LP316	51	201	1112	12.7	6.4	0.25	GS4MT, HTMT, PPTMT, ST2MT or ST3MT	50	250
MLT4LH-LP316	102	362	1112	12.7	6.4	0.25		50	250
MLT6LH-LP316	152	521	1112	12.7	6.4	0.25		50	250
MLT8LH-LP316	203	679	1112	12.7	6.4	0.25		50	250
Heavy Cross Section									
MLT2H-LP316	51	201	2000	12.7	7.9	0.25	GS4MT, HTMT, PPTMT, ST2MT or ST3MT	50	250
MLT2.7H-LP316	69	259	2000	12.7	7.9	0.25		50	250
MLT4H-LP316	102	362	2000	12.7	7.9	0.25		50	250
MLT6H-LP316	152	521	2000	12.7	7.9	0.25		50	250
MLT8H-LP316	203	679	2000	12.7	7.9	0.25		50	250
MLT10H-LP316	254	838	2000	12.7	7.9	0.25		50	250
Extra-Heavy Cross Section									
MLT4EH-LP316	102	434	2670	25.4	12.7	0.25	RT1HT or ST3MT	50	250
MLT6EH-LP316	152	594	2670	25.4	12.7	0.25		50	250
MLT8EH-LP316	203	754	2670	25.4	12.7	0.25		50	250
MLT4EH15-LP316	102	434	3115	25.4	12.7	0.38		50	250
MLT6EH15-LP316	152	594	3115	25.4	12.7	0.38		50	250
MLT8EH15-LP316	203	754	3115	25.4	12.7	0.38		50	250
Super-Heavy Cross Section									
MLT4SH-LP316	102	434	4005	25.4	15.9	0.38	RT1HT	50	250
MLT6SH-LP316	152	594	4005	25.4	15.9	0.38		50	250
MLT8SH-LP316	203	754	4005	25.4	15.9	0.38		50	250

*Per SAE Standard AS23190/3 (formerly MIL).
 **Other lengths available, contact customer service.
 ***For information on installation tools, refer to page 76.

Custom Length Banding System MBS, MBH, MBEH and MBSH Banding

- For applications that require bundling various bundle diameters
- Supplied in reels of 61m, 76m or 305m
- Bundle any size bundle diameter
- To use, pull out as much banding as needed, cut off using GS4MT with CAMT accessory or with shears and install with MTHS, MTHEH, MTHH or MTHSH banding heads

Polyester coating option provides:

- Low smoke
- Halogen free
- Temperature tolerance -40°C to 150°C
- Good UV resistance

Part Number	Max. Bundle Diameter	Length**	Min. Loop Tensile Strength*	Min. Bundle Diameter	Width	Thickness	Recommended PANDUIT Installation Tool***	Recommended Banding Head	Std. Pkg. Qty.
	mm								

AISI 304 Stainless Steel — For General Purpose Banding

Standard Cross Section

MBS-TLR	Any	76	445	12.7	4.4	0.25	GS4MT, HTMT, PPTMT, ST2MT or ST3MT	MTHS-C	1
MBS-MR	Any	305	445	12.7	4.4	0.25		MTHS-C	1

Heavy Cross Section

MBH-TLR	Any	76	1112	12.7	7.9	0.25	GS4MT, HTMT, PPTMT, ST2MT or ST3MT	MTHH-C	1
MBH-MR	Any	305	1112	12.7	7.9	0.25		MTHH-C	1

Extra-Heavy Cross Section

MBEH-TLR	Any	76	1335	25.4	12.7	0.25	RT1HT, ST3MT	MTHEH-C	1
----------	-----	----	------	------	------	------	--------------	---------	---

Super-Heavy Cross Section

MBSH-TR	Any	61	2000	25.4	15.9	0.38	RT1HT	MTHSH-C	1
---------	-----	----	------	------	------	------	-------	---------	---

AISI 316 Stainless Steel — For Superior Corrosion Resistance

Standard Cross Section

MBS-TLR316	Any	76	445	12.7	4.4	0.25	GS4MT, HTMT, PPTMT, ST2MT or ST3MT	MTHS-C316	1
MBS-MR316	Any	305	445	12.7	4.4	0.25		MTHS-C316	1

Heavy Cross Section

MBH-TLR316	Any	76	1112	12.7	7.9	0.25	GS4MT, HTMT, PPTMT, ST2MT or ST3MT	MTHH-C316	1
MBH-MR316	Any	305	1112	12.7	7.9	0.25		MTHH-C316	1

NEW! Extra-Heavy Cross Section

MBEH-TLR316	Any	76	1335	25.4	12.7	0.25	RT1HT, ST3MT	MTHEH-C316	1
-------------	-----	----	------	------	------	------	--------------	------------	---

Super-Heavy Cross Section

MBSH-TR316	Any	61	2000	25.4	15.9	0.38	RT1HT	MTHSH-C316	1
------------	-----	----	------	------	------	------	-------	------------	---

NEW! Polyester Coated AISI 316 Stainless Steel

Heavy Cross Section

MBCH-QR316	Any	25	1112	12.7	7.9	0.25	GS4MT, HTMT, PPTMT, ST2MT or ST3MT	MTHH-C316	1
------------	-----	----	------	------	-----	------	------------------------------------	-----------	---

Extra-Heavy Cross Section

MBCEH-QR316	Any	25	1335	25.4	12.7	0.25	RT1HT, ST3MT	MTHEH-C316	1
-------------	-----	----	------	------	------	------	--------------	------------	---

Super-Heavy Cross Section

MBCSH-QR316	Any	25	2000	25.4	15.9	0.38	RT1HT	MTHSH-C316	1
-------------	-----	----	------	------	------	------	-------	------------	---

*Per SAE Standard AS23190/3 (formerly MIL).

**The GS4MT with CAMT accessory is recommended for cutting the banding. This system provides a straight cut-off which assists in head assembly and eliminates the need for shears.

***For information on installation tools, refer to page 76.

To determine the proper amount of banding required, use the following formula to determine length of banding needed

Calculate Diameter mm x 3.14 + 76mm

Example: 250mm Diameter Bundle

250mm x 3.14 = 785mm 785mm + 76mm = 861mm of banding required.

PANDUIT™ PAN-STEEL™ Custom Length Banding System

MTHS, MTHH, MTHEH and MTSB Banding Heads



- To use, take one end of the cut banding and bend back 13mm
- Bend tail flat against bottom of banding head to complete assembly
- Take a self-locking head and slide it the entire length of the band until it reaches the bend

Part Number	Part Description	Std. Pkg. Qty.	Std. Ctn. Qty.
AISI 304 Stainless Steel — For Banding Heads			
MTHS-C	Loose piece banding head for Standard cross section banding.	100	1000
MTHH-C	Loose piece banding head for Heavy cross section banding.	100	1000
MTHEH-C	Loose piece banding head for Extra-Heavy cross section banding.	100	1000
MTSH-C	Loose piece banding head for Super-Heavy cross section banding.	100	1000
AISI 316 Stainless Steel — For Banding Heads			
MTHS-C316	Loose piece banding head for Standard cross section banding.	100	1000
MTHH-C316	Loose piece banding head for Heavy cross section banding.	100	1000
MTHEH-C316	Loose piece banding head for Extra-Heavy cross section banding.	100	1000
MTSH-C316	Loose piece banding head for Super-Heavy cross section banding.	100	1000

PAN-STEEL™ Coated Stainless Steel Cable Ties

Enhanced Patented Nylon 11 Selectively Coated Ties – MLTC Series



- For communication and electrical cables
 - Strength of steel, the protection of nylon; the nylon coating provides protection for the cables
 - Base metal 316 grade stainless steel for excellent resistance to temperature extremes, corrosion, weather, chemicals, salt sprays and UV radiation
- Nylon 11 Coating:**
- Resistance to chemicals and salt sprays
 - Halogen-free
 - Temperature tolerance -40°C to 140°C
 - Coating thickness 0.08mm / 0.13mm per side

Part Number	Max. Bundle Diameter mm	Length mm	Min. Loop Tensile Strength* N	Min. Bundle Diameter mm	Width mm	Thickness** mm	Recommended PANDUIT Installation Tool***	Std. Pkg. Qty.	Std. Ctn. Qty.
AISI 316 Stainless Steel — For Nylon 11 Selectively Coated Cable Ties									
Heavy Cross Section									
MLTC2H-LP316	51	201	1112	12.7	7.9	0.25	GS4MT, HTMT, PPTMT, ST2MT or ST3MT	50	250
MLTC4H-LP316	102	362	1112	12.7	7.9	0.25		50	250
MLTC6H-LP316	152	521	1112	12.7	7.9	0.25		50	250
MLTC8H-LP316	203	679	1112	12.7	7.9	0.25		50	250
MLTC10H-LP316	254	838	1112	12.7	7.9	0.25		50	250

*Per SAE Standard AS23190/3 (formerly MIL).

**Base material less coating.

***For information on installation tools, refer to page 76.

Coated, Self-Locking Stainless Steel Ties



- Base metal is AISI 316 grade stainless steel
- Self-locking with low thread force
- Available in standard, light-heavy, heavy, extra-heavy and super-heavy cross sections
- Low smoke
- Halogen free
- Temperature tolerance -40°C to 150°C
- Good UV resistance

Part Number	Max. Bundle Diameter mm	Length mm	Min. Loop Tensile Strength* N	Min. Bundle Diameter mm	Width mm	Thickness** mm	Recommended PANDUIT Installation Tool***	Std. Pkg. Qty.	Std. Ctn. Qty.
Standard Cross Section									
MLTFC2S-CP316	51	201	445	12.7	4.6	0.25	GS4MT, HTMT, PPTMT, ST2MT, or ST3MT	100	500
MLTFC4S-CP316	102	362	445	12.7	4.6	0.25		100	500
MLTFC6S-CP316	152	521	445	12.7	4.6	0.25		100	500
MLTFC8S-CP316	203	679	445	12.7	4.6	0.25		100	500
Light-Heavy Cross Section									
MLTFC2LH-LP316	51	201	668	12.7	6.4	0.25	GS4MT, HTMT, PPTMT, ST2MT, or ST3MT	50	250
MLTFC4LH-LP316	102	362	668	12.7	6.4	0.25		50	250
MLTFC6LH-LP316	152	521	668	12.7	6.4	0.25		50	250
MLTFC8LH-LP316	203	679	668	12.7	6.4	0.25		50	250
Heavy Cross Section									
MLTFC2H-LP316	51	201	1112	12.7	7.9	0.25	GS4MT, HTMT, PPTMT, ST2MT, or ST3MT	50	250
MLTFC4H-LP316	102	362	1112	12.7	7.9	0.25		50	250
MLTFC6H-LP316	152	521	1112	12.7	7.9	0.25		50	250
MLTFC8H-LP316	203	679	1112	12.7	7.9	0.25		50	250
Extra-Heavy Cross Section									
MLTFC2EH-LP316	51	300	1335	N/A	12.7	0.25	RT1HT or ST3MT	50	250
MLTFC4EH-LP316	102	434	1335	25.4	12.7	0.25		50	250
MLTFC6EH-LP316	152	594	1335	25.4	12.7	0.25		50	250
MLTFC8EH-LP316	203	754	1335	25.4	12.7	0.25		50	250

*Per SAE Standard AS23190/3 (formerly MIL).

**Base material less coating.

***For information on installation tools, refer to pages 76.

PANDUIT™ PAN-STEEL™ WAVE-TY™ Superior Grip Stainless Steel Cable Ties

Enhanced PAN-STEEL™ WAVE-TY™ Superior Grip Stainless Steel Ties



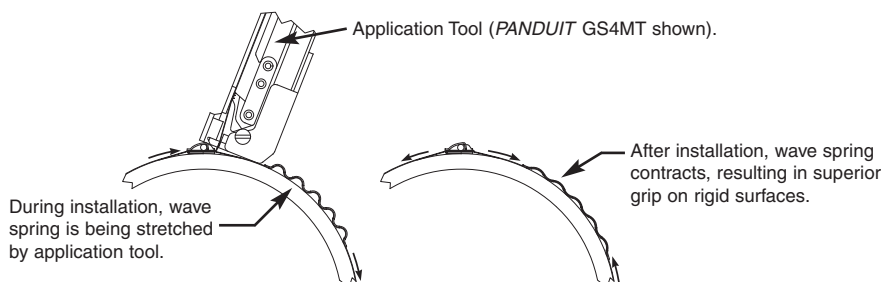
- Patented wave-form spring maintains greater installed tension on non-resilient objects
- Tightly clamps on applications where other stainless steel ties will not function
- Retains tension on a solid bundle with minimal applied force
- Available in AISI 304 for general purpose and AISI 316 stainless steel material for the most corrosive environments
- Guarantees performance in critical applications
- Self-locking with low thread force

Part Number	Max. Bundle Diameter	Length**	Min. Loop Tensile Strength*	Min. Bundle Diameter	Width	Thickness	Recommended PANDUIT Installation Tool***	Std. Pkg. Qty.	Std. Ctn. Qty.
	mm								
AISI 304 Stainless Steel									
Standard Cross Section									
MLT2.7WS-LP	69	259	890	51	4.6	0.25	GS4MT, HTMT, PPTMT, ST2MT or ST3MT	50	250
MLT4WS-LP	102	362	890	51	4.6	0.25		50	250
MLT6WS-LP	152	521	890	51	4.6	0.25		50	250
MLT8WS-LP	203	679	890	51	4.6	0.25		50	250
Light-Heavy Cross Section									
MLT2.7WLH-LP	69	259	1112	51	6.4	0.25	GS4MT, HTMT, PPTMT, ST2MT or ST3MT	50	250
MLT4WLH-LP	102	362	1112	51	6.4	0.25		50	250
MLT6WLH-LP	152	521	1112	51	6.4	0.25		50	250
MLT8WLH-LP	203	679	1112	51	6.4	0.25		50	250
Heavy Cross Section									
MLT2.7WH-LP	69	259	2000	51	7.9	0.25	GS4MT, HTMT, PPTMT, ST2MT or ST3MT	50	250
MLT4WH-LP	102	362	2000	51	7.9	0.25		50	250
MLT6WH-LP	152	521	2000	51	7.9	0.25		50	250
MLT8WH-LP	203	679	2000	51	7.9	0.25		50	250
MLT10WH-LP	254	838	2000	51	7.9	0.25		50	250
AISI 316 Stainless Steel									
Standard Cross Section									
MLT2.7WS-LP316	69	259	890	51	4.6	0.25	GS4MT, HTMT, PPTMT, ST2MT or ST3MT	50	250
MLT4WS-LP316	102	362	890	51	4.6	0.25		50	250
MLT6WS-LP316	152	521	890	51	4.6	0.25		50	250
MLT8WS-LP316	203	679	890	51	4.6	0.25		50	250
Light-Heavy Cross Section									
MLT2.7WLH-LP316	69	259	1112	51	6.4	0.25	GS4MT, HTMT, PPTMT, ST2MT or ST3MT	50	250
MLT4WLH-LP316	102	362	1112	51	6.4	0.25		50	250
MLT6WLH-LP316	152	521	1112	51	6.4	0.25		50	250
MLT8WLH-LP316	203	679	1112	51	6.4	0.25		50	250
Heavy Cross Section									
MLT2.7WH-LP316	69	259	2000	51	7.9	0.25	GS4MT, HTMT, PPTMT, ST2MT or ST3MT	50	250
MLT4WH-LP316	102	362	2000	51	7.9	0.25		50	250
MLT6WH-LP316	152	521	2000	51	7.9	0.25		50	250
MLT8WH-LP316	203	679	2000	51	7.9	0.25		50	250
MLT10WH-LP316	254	838	2000	51	7.9	0.25		50	250

*Per SAE Standard AS23190/3 (formerly MIL).

**Base material less coating.

***For information on installation tools, refer to page 76.



Installation Tools for Stainless Steel Cable Ties and Custom Length Banding

- Complete line of manual and pneumatic installation tools speed installation
- Side entry of cable ties into the tools means quick and easy installation
- Automatic tension and cut-off capabilities available on select models
- High reliability, low maintenance, long life



Part Number	Part Description	Std. Pkg. Qty.
PPTMT	Pneumatic hand tool used with <i>PAN-STEEL™</i> Type MLT ties, Type MLTC coated ties, <i>WAVE-TY™</i> Stainless Steel Ties. Automatically tensions and cuts off tie when predetermined tension is reached, providing more reliable and consistent installations. Ideal for high production applications. Installs standard 4.4mm, light-heavy 6.4mm and heavy 7.9mm cross section ties.	1
PPH10G	3m hose assembly; 3.2mm NPT male connector.	1
MK-06	Filter regulator.	1
KPPTMTG	Replacement gripper kit for PPTMT.	1
KPPTMTB	Replacement blade kit for PPTMT.	1
GS4MT	Used with Standard, Light-Heavy and Heavy cross section <i>PAN-STEEL™</i> Type MLT ties, Type MLTC Coated ties and <i>WAVE-TY™</i> Stainless Steel Ties. Military Approval MS90387-3.	1
K4M-BLD	Replacement cutter blade for GS4MT.	1
K4MTG	Replacement tension gripper for GS4MT.	1
CAMT	Cut-off accessory. Use this accessory with GS4MT tool to cut MBH or MBS continuous banding. Accessory drops in place for use.	1
TTLK3	Tool Tension Locking Kit for GS4MT and PPTMT installation tools.	1
ST2MT	Used with Standard, Light-Heavy and Heavy cross section <i>PAN-STEEL™</i> Type MLT ties, Type MLTC coated ties and <i>WAVE-TY™</i> Stainless Steel Ties.	1
ST3MT	Used with Standard, Light-Heavy, Heavy, and Extra-Heavy cross section <i>PAN-STEEL™</i> Type MLT ties, Type MLTC coated ties and <i>WAVE-TY™</i> Stainless Steel Ties.	1
KT3MG	Replacement tension gripper for ST3MT tool.	1
RT1HT	Used with Extra-Heavy and Super-Heavy cross section <i>PAN-STEEL™</i> type MLT ties.	1
HTMT	Used with Standard, Light-Heavy and Heavy cross section <i>PAN-STEEL™</i> Type MLT ties, Type MLTC coated ties and <i>WAVE-TY™</i> Superior Grip Stainless Steel Ties.	1

PAN-STEEL™ Accessories

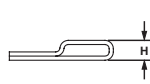
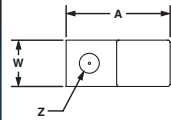
PCS Cushion Sleeve



- Black neoprene sleeving slips on standard and heavy cross section *PAN-STEEL™* Stainless Steel Ties and Custom Length Banding
- Provides full separation between the ties and the material to which you are fastening
- Used on applications requiring an improved grip on non-resilient objects
- Operating temperature range 5°C to 93°C
- Can be used indoors or outdoors excellent ultraviolet resistance, good resistance to petroleum, and many chemicals
- Flammability rating UL94V-0

Part Number	Width	Length	Std. Pkg. Qty.
	mm	m	
PCSS-B-CR	8.4	30.5	1
PCSH-B-CR	11.9	30.5	1

MTM1H Stainless Steel Tie Mounts

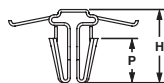
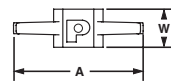


- Low profile
- One hole mounting
- For use with Standard, Light-Heavy and Heavy cross section *PAN-STEEL™* Ties as well as 9.5mm wide strapping
- 304 Stainless Steel

Part Number	Used with <i>PAN-STEEL™</i> Ties/Strapping	Mounting Method*	Length A	Width W	Height H	Hole Diameter Z	Std. Pkg. Qty.	Std. Ctn. Qty.
			mm	mm	mm	mm		
MTM1H-C	MLTS/LH/H, MSW38 or MSCW38	M4 screw	22.8	10.2	4.4	4.4	100	1000
MTM1H10-C	MLTS/LH/H, MSW38 or MSCW38	M5 screw	22.8	10.2	4.4	5.4	100	1000
MTM1H25-C	MLTS/LH/H, MSW38 or MSCW38	M6 screw	22.8	10.2	4.4	7.1	100	1000

*Stainless steel screws are recommended for fastening to avoid corrosion problems associated with dissimilar metals.

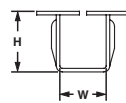
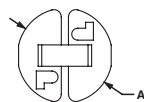
Stainless Steel Push Mount



- No tapping required
- Used where only one side of the panel is accessible
- Nothing to assemble
- For use with Standard, Light-Heavy and Heavy cross section *PAN-STEEL™* Ties
- 304 Stainless Steel

Part Number	Used with <i>PAN-STEEL™</i> Ties/Strapping	Mounting Method	Length A	Width W	Height H	Panel Thickness P	Std. Pkg. Qty.	Std. Ctn. Qty.
			mm	mm	mm	mm		
MPWM-H56-Q	MLTS/LH/H	Inserted into pre-drilled hole 8mm	24.7	7.3	14.2	0.8 – 2.4	25	250

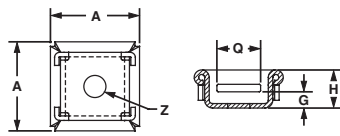
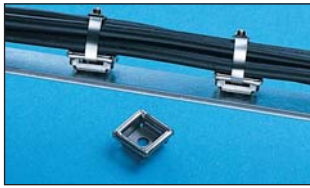
Stainless Steel Push Button Mount



- Low profile
- No tapping required
- Designed for use only where both sides of the panel are accessible
- For use with Standard cross section *PAN-STEEL™* Ties
- 304 Stainless Steel

Part Number	Used with <i>PAN-STEEL™</i> Ties/Strapping	Mounting Method	Diameter D	Width W	Height H	Panel Thickness	Std. Pkg. Qty.	Std. Ctn. Qty.
			mm	mm	mm	mm		
MBM-H25-Q	MLT-S	Inserted into pre-drilled hole 6.4mm.	10.0	5.0	6.5	0.8 – 3.0	25	250

Stainless Steel 2-Way Tie Mount

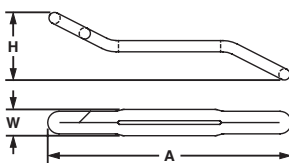


- Two-way mount allows stainless steel cable ties to be inserted from either of two sides
- Low profile
- Single hole center mounting for maximum holding and stability
- Maximum screw head height 2.3mm
- For use with Standard, Light-Heavy and Heavy cross section *PAN-STEEL™* Ties
- 304 Stainless Steel

Part Number	Used with <i>PAN-STEEL™</i> Ties/Strapping	Mounting Method*	Length A	Height H	Screw Head Height G	Slot Width Q	Hole Diameter Z	Std. Pkg. Qty.	Std. Ctn. Qty.
			mm	mm	mm	mm	mm		
MTM2H-Q	MLTS/LH/H	M4 screw	18.0	8.0	2.3	9.0	4.5	25	250

*Stainless steel screws are recommended for fastening to avoid corrosion problems associated with dissimilar metals.

Stainless Steel Bulkhead Mount



- Zero profile
- Mounts directly to surface
- Used where only one side of the panel is accessible
- Permanent, secure application
- 304 Stainless Steel

Part Number	Used with <i>PAN-STEEL™</i> Ties/Strapping	Mounting Method	Length A	Width W	Height H	Max. Panel Thickness	Std. Pkg. Qty.	Std. Ctn. Qty.
			mm	mm	mm	mm		
MTMBH-Q	MLTS/LH/H	Pre-drill hole size Standard and Light Heavy cross section MLT-S/LH 9.5mm – 12.7mm Heavy cross section MLT-H 12.7mm – 15.9mm	48.5	5.3	13.7	12.7	25	250

Stainless Steel, Brass and Aluminum Marker Plates and Tags



Most tags are provided with one 6.35mm hole

- Identify pipes, conduit, valves, cables and equipment in petrochemical plants, pulp and paper mills, refineries, offshore oil rigs and in any other harsh environments
- All marker plates/tags can be custom marked by *PANDUIT* with one of two computer controlled systems (laser or embosser) to provide permanent identification to resist corrosion, abrasion and radiation
- Use with *PANDUIT™ PAN-STEEL™* Stainless Steel Cable Ties for fast installation at lowest installed cost

Part Number	Used with <i>PAN-STEEL™</i> Ties	Plate/Tag Size		Material	Thickness mm	Std. Pkg. Qty.	Std. Ctn. Qty.
		Width mm	Length mm				
MMP350-C	MLT-S	19	89	304 Stainless Steel	0.25	100	1000
MMP350-C316	MLT-S	19	89	316 Stainless Steel	0.25	100	1000
MMP350H-C	MLT-S/H	19	89	304 Stainless Steel	0.25	100	1000
MMP350W38-C	MLT-S	10	89	304 Stainless Steel	0.25	100	1000
MMP350W38-C316	MLT-S	10	89	316 Stainless Steel	0.25	100	1000
MT150D-Q	MLT-S	38	Circular	304 Stainless Steel	0.89	25	250

Metal Embossing Tape System



- Embosses 5mm characters onto rolls of stainless steel or aluminium tape
- Can be used with *PAN-STEEL™* Stainless Steel Ties as a flag or a marker
- Excellent for on-site applications requiring quick, easy and permanent identification

Part Number	Part Description	Std. Pkg. Qty.
Tool Kit		
MEHT	Includes tool, carrying case, (1) roll each META (aluminum) and METS4 (stainless) tape. Characters Include: A B C D E F G H I J K L M N O P Q R S T U V W X Y Z 2 3 4 5 6 7 8 9 . /	1

Tape

META-X	12.7mm x 4.9M aluminium tape*.	10**
METS3-X	12.7mm x 6.4M 316 grade stainless steel tape.	10**
METS4-X	12.7mm x 6.4M 304 grade stainless steel tape.	10**

* Galvanic reaction may occur between stainless steel ties and aluminum tape in certain environments causing the aluminium to corrode.

Indenter Press



- For identification in various environments
- Provides quick, easy and permanent identification of *PANDUIT™ PAN-STEEL™* Stainless Steel Cable Ties, Straps, Marker Plates, and Tags
- Interchangeable wheels
- Press includes fixture to hold MMP350 series marker plates, MLT series cable ties, and MS strapping in place to provide high quality marking
- Tool is designed for long life and durability
- Automatic table indexing
- Depth adjustment screw

Part Number	Part Description	Std. Pkg. Qty.
Press		
IMP094	Indenter press with 2.38mm character wheel.	1
IMP125	Indenter press with 3.18mm character wheel.	1
IMP187	Indenter press with 4.77mm character wheel.	1
Interchangeable Wheel Kits		
MWK094	2.38mm character wheel kit (wheel and indexing gear).	1
MWK125	3.18mm character wheel kit (wheel and indexing gear).	1
MWK187	4.77mm character wheel kit (wheel and indexing gear).	1
IMP-FIX	Interchangeable fixture for MMP172, MMP338, MT Series, and the aluminium marker plates.	1

PAN-STEEL™ Stainless Steel Strapping



- Buckle design provides a low finished profile
- After tensioning, cut end is locked inside buckle — no sharp edges
- Buckle locked in place — will not slip down strap
- Available in 316 material for the most corrosive environments

Part Number	Max. Bundle Diameter	Length mm	Min. Loop Tensile Strength* N	Min. Bundle Diameter mm	Width mm	Thickness mm	Recommended PANDUIT Installation Tool	Std. Pkg. Qty.	Std. Ctn. Qty.
	mm								
AISI 304 Stainless Steel									
MS2W38T15-L4	51	300	2225	25.4	9.5	0.38	BT1HT, BT2MS75	50	250
MS4W38T15-L4	102	457	2225	25.4	9.5	0.38		50	250
MS6W38T15-L4	152	620	2225	25.4	9.5	0.38		50	250
MS8W38T15-L4	203	780	2225	25.4	9.5	0.38		50	250
MS10W38T15-L4	254	940	2225	25.4	9.5	0.38		50	250
MS4W50T15-L4	102	457	3115	25.4	12.7	0.38		50	250
MS6W50T15-L4	152	620	3115	25.4	12.7	0.38		50	250
MS8W50T15-L4	203	780	3115	25.4	12.7	0.38		50	250
MS10W50T15-L4	254	940	3115	25.4	12.7	0.38		50	250
MS4W63T15-L4	102	457	3560	25.4	15.9	0.38		50	250
MS6W63T15-L4	152	620	3560	25.4	15.9	0.38		50	250
MS8W63T15-L4	203	780	3560	25.4	15.9	0.38		50	250
MS10W63T15-L4	254	940	3560	25.4	15.9	0.38		50	250
AISI 316 Stainless Steel									
MS2W38T15-L6	51	300	2225	25.4	9.5	0.38	BT1HT, BT2MS75	50	250
MS4W38T15-L6	102	457	2225	25.4	9.5	0.38		50	250
MS6W38T15-L6	152	620	2225	25.4	9.5	0.38		50	250
MS8W38T15-L6	203	780	2225	25.4	9.5	0.38		50	250
MS10W38T15-L6	254	940	2225	25.4	9.5	0.38		50	250
MS4W50T15-L6	102	457	3115	25.4	12.7	0.38		50	250
MS6W50T15-L6	152	620	3115	25.4	12.7	0.38		50	250
MS8W50T15-L6	203	780	3115	25.4	12.7	0.38		50	250
MS10W50T15-L6	254	940	3115	25.4	12.7	0.38		50	250
MS4W63T15-L6	102	457	3560	25.4	15.9	0.38		50	250
MS6W63T15-L6	152	620	3560	25.4	15.9	0.38		50	250
MS8W63T15-L6	203	780	3560	25.4	15.9	0.38		50	250
MS10W63T15-L6	254	940	3560	25.4	15.9	0.38		50	250

Custom Length Strapping



- For applications that require various bundle diameters
- Supplied in reels of 30.5 m and 25 m
- 304 and 316 stainless steel
- Provides job-site versatility with minimum inventory
- Available with Nylon 11 coating or PPA 571 coating for additional edge protection

Part Number	Min. Loop Tensile Str.*	Width mm	Thickness** mm	Used with Buckle	Recommended PANDUIT Installation Tool	Std. Pkg. Qty.***
	N					
304 Stainless Steel						
MSW38T15-CR4	2225	9.5	0.38	MSBW38-C4	BT1HT, BT2MS75	1
MSW50T15-CR4	3115	12.7	0.38	MSBW50-C4		1
MSW63T15-CR4	3560	15.9	0.38	MSBW63-C4		1
316 Stainless Steel						
MSW38T15-CR6	2225	9.5	0.38	MSBW38-C6	BT1HT, BT2MS75	1
MSW50T15-CR6	3115	12.7	0.38	MSBW50-C6		1
MSW63T15-CR6	3560	15.9	0.38	MSBW63-C6		1
Nylon Coated Custom Length Strapping						
MSCNW38T15-QR6	2225	9.5	0.38	MSBW38-C6	BT1HT, BT2MS75	1
MSCNW50T15-QR6	3115	12.7	0.38	MSBW50-C6		1
MSCNW63T15-QR6	3560	15.9	0.38	MSBW63-C6		1
PPA Coated Custom Length Strapping						
MSCW38T15-QR6	2225	9.5	0.38	MSBW38-C6	BT1HT, BT2MS75	1
MSCW50T15-QR6	3115	12.7	0.38	MSBW50-C6		1
MSCW63T15-QR6	3560	15.9	0.38	MSBW63-C6		1

Buckles for Custom Length Strapping



- Buckle design provides a low finished profile
- After tensioning cut end is locked inside buckle
- No exposed sharp edge

Part Number	Material	Width	Part Description	Std. Pkg. Qty.	Std. Ctn. Qty.
		mm			
MSBW38-C4	304	9.5	Individual low profile buckles.	100	1000
MSBW50-C4	304	12.7		100	1000
MSBW63-C4	304	15.9		100	1000
MSBW38-C6	316	9.5		100	1000
MSBW50-C6	316	12.7		100	1000
MSBW63-C6	316	15.9		100	1000

BT2MS75 Installation Tool for Strapping – (MS Series)



Hand operated tool. Adjustable tension control and lever actuated cut-off.



BT2MS75

- Strap side entry
- One or two hand tensioning with multi-position rear handle
- Lever actuated cut-off
- Easy removal of excess strap
- Installs all (3) sizes: 9.5mm, 12.7mm and 15.9mm

Part Number	Part Description	Std. Pkg. Qty.
BT1HT	Installation tool. Used for all widths of PANDUIT™ PAN-STEEL™ strapping. Tensions, cuts strapping, and secures the buckle tab. Ratchet-type tool provides mechanical advantage for tensioning. Easy to operate.	1
BT2MS75	Installation tool. Used for all widths of PANDUIT™ PAN-STEEL™ strapping. Tensions, cuts strapping, and secures the buckle tab. Allows one hand operation in otherwise difficult areas to install. Pliers-type tool provides mechanical advantage for tensioning. Easy to operate.	1
BT2N75	Replacement nose section for BT2MS75 tool. Provides the economy of repair vs. total tool replacement. Easy to install on tool.	1
KT2MG	Replacement tension gripper for BT2MS75 and ST2MT tool. Easy to install on tool. Can be part of a maintenance program. Extends life of tool.	1