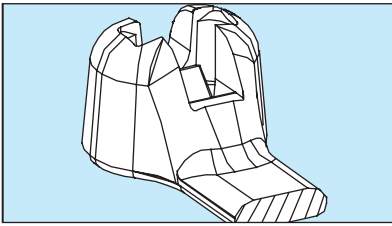


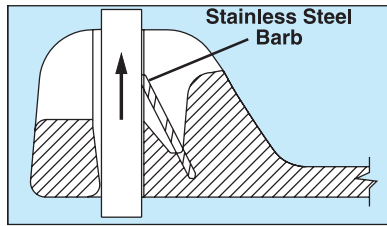
## DOME-TOP™ Barb Ty Cable Tie Features/Benefits

### 1. Dome-Top Head



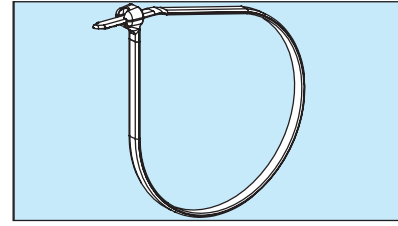
- Unique patented design
- Rounded smooth edges
- No irritation to installer's hands

### 2. Stainless Steel Barb



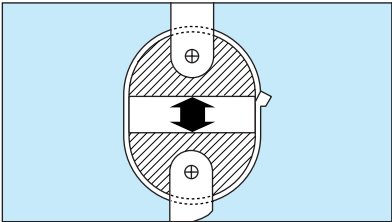
- Made of 316 corrosion resistant stainless steel
- Provides consistent performance and reliability for users who prefer a cable tie with a metal barb
- Infinitely adjustable for tight bundles through its entire bundle range

### 3. Low Threading Force



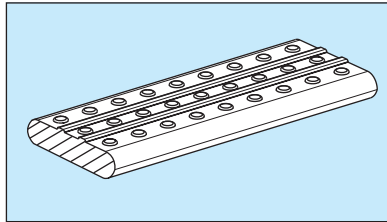
- Reduces installer fatigue
- Increases productivity

### 4. High Tensile Strength



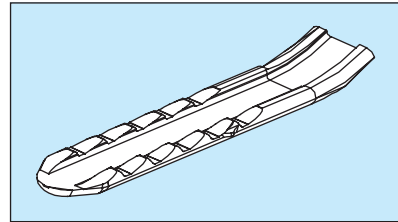
- Exceeds industry and Aerospace Standard SAE (AS23190) standards
- Available in four loop tensile strengths from 80N to 534N to provide a wide selection

### 5. Anti-Slip Strap Body



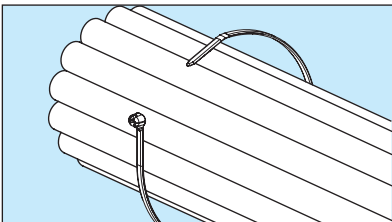
- Ribbed and stippled strap body prevents axial and lateral movement

### 6. Finger Tip Grip



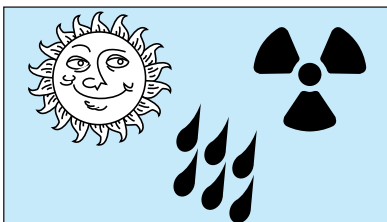
- Exclusively designed finger grip is available on all sizes of DOME-TOP™ Barb Ty Cable Ties to assure positive grip during threading of the tie

### 7. Curved Tip



- Orients tip toward head to speed installation; lowers installed cost
- Faster initial threading
- Easier to pick up from flat surfaces
- Only applies to M, I and S ties

### 8. Material/Size Availability



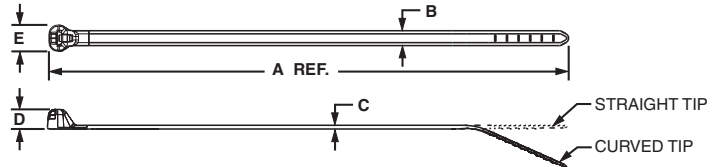
- Available in lengths from 102mm to 780mm to meet a variety of applications
- Several materials available for special environments: Natural nylon 6.6, weather resistant black nylon 6.6, heat stabilised nylon 6.6 and a variety of colours

# PANDUIT™ DOME-TOP™ Barb Ty Cable Ties (BT Series)

## DOME-TOP™ Barb Ty Cable Ties



- Available in Miniature, Intermediate, Standard and Light-Heavy cross sections
- Bundle diameters up to 229mm
- Available in natural, weather resistant and heat stabilised nylon and a variety of colours
- Tool or hand installed



Part Number	Length A mm	Width B mm	Thickness C mm	Head Height D mm	Head Width E mm	Max. Bundle Dia. mm	Min. Loop Tensile Str. N	Recommended PANDUIT Installation Tool	Std. Pkg. Qty.	Std. Ctn. Qty.
<b>Miniature Cross Section</b>										
BT1M-C	102	2.4	0.9	4.0	4.4	23	80	GTS, GS2B, PTS, PPTS, STS2	100	1000
BT1.5M-C	160	2.4	1.2	4.0	4.6	38	80		100	1000
BT2M-C	201	2.4	1.2	4.0	4.6	51	80		100	1000
BT4M-C	361	2.4	1.2	4.0	4.6	102	80		100	1000
<b>Intermediate Cross Section</b>										
BT1.5I-C	155	3.6	1.0	4.7	6.3	38	178	GTS, GS2B, PTS, PPTS, STS2	100	1000
BT2I-C	203	3.6	1.0	4.7	6.3	51	178		100	1000
BT3I-C	287	3.6	1.2	4.7	6.3	76	178		100	1000
BT4I-C	363	3.6	1.2	4.7	6.3	102	178		100	1000
<b>Standard Cross Section</b>										
BT2S-C	203	4.7	1.2	5.6	8.1	51	222	GTS, GS2B, GTH, GS4H, PTS, PPTS, STS2, STH2	100	1000
BT3S-C	305	4.7	1.3	5.6	8.1	76	222		100	1000
BT4S-C	384	4.7	1.3	5.6	8.1	102	222		100	1000
<b>Light-Heavy Cross Section (Straight Tip)</b>										
BT2LH-L	221	7.0	1.7	8.1	13.2	51	534	GTH, GS4H, GS4EH, PPTEH, STH2, ST2EH	50	500
BT3LH-L	300	7.0	1.7	8.1	13.2	76	534		50	500
BT4LH-L	378	7.0	1.7	8.1	13.2	102	534		50	500
BT5LH-L	460	7.0	1.7	8.1	13.2	127	534		50	500
BT6LH-L	538	7.0	1.7	8.1	13.2	152	534		50	500
BT7LH-L	620	7.0	1.7	8.1	13.2	178	534		50	500
BT8LH-L	699	7.0	1.7	8.1	13.2	203	534		50	500
BT9LH-L	780	7.0	1.7	8.1	13.2	229	534		50	500

# PANDUIT™ Weather Resistant *DOME-TOP™* Barb Ty Cable Ties (BT Series)

## *DOME-TOP™* Barb Ty Cable Ties



Side View



Front View



Except 'LH-0' Ties

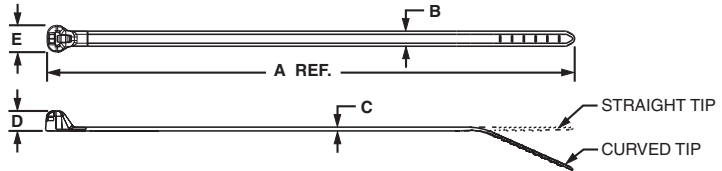


Except 'LH-0' Ties



Except 'LH-0' Ties

- Available in Miniature, Intermediate, Standard and Light-Heavy cross sections
- Bundle diameters up to 229mm
- Weather resistant nylon has greater resistance to ultraviolet light which damages natural nylon



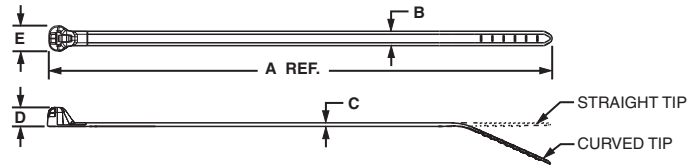
Part Number	Length A	Width B	Thickness C	Head Height D	Head Width E	Max. Bundle Dia. mm	Min. Loop Tensile Str. N	Recommended <i>PANDUIT</i> Installation Tool	Std. Pkg. Qty.	Std. Ctn. Qty.
	mm	mm	mm	mm	mm					
<b>Miniature Cross Section</b>										
BT1M-C0	102	2.4	0.9	4.0	4.4	23	80	GTS, GS2B, PTS, PPTS, STS2	100	1000
BT1.5M-C0	160	2.4	1.2	4.0	4.6	38	80		100	1000
BT2M-C0	201	2.4	1.2	4.0	4.6	51	80		100	1000
BT4M-C0	361	2.4	1.2	4.0	4.6	102	80		100	1000
<b>Intermediate Cross Section</b>										
BT1.5I-C0	155	3.6	1.0	4.7	6.3	38	178	GTS, GS2B, PTS, PPTS, STS2	100	1000
BT2I-C0	203	3.6	1.0	4.7	6.3	51	178		100	1000
BT3I-C0	287	3.6	1.2	4.7	6.3	76	178		100	1000
BT4I-C0	363	3.6	1.2	4.7	6.3	102	178		100	1000
<b>Standard Cross Section</b>										
BT2S-C0	203	4.7	1.2	5.6	8.1	51	222	GTS, GS2B, GTH, GS4H, PTS, PPTS, STS2, STH2	100	1000
BT3S-C0	305	4.7	1.3	5.6	8.1	76	222		100	1000
BT4S-C0	384	4.7	1.3	5.6	8.1	102	222		100	1000
<b>Light-Heavy Cross Section (Straight Tip)</b>										
BT2LH-L0	221	7.0	1.7	8.1	13.2	51	534	GTH, GS4H, GS4EH, PPTEH, STH2, ST2EH	50	500
BT3LH-L0	300	7.0	1.7	8.1	13.2	76	534		50	500
BT4LH-L0	378	7.0	1.7	8.1	13.2	102	534		50	500
BT5LH-L0	460	7.0	1.7	8.1	13.2	127	534		50	500
BT6LH-L0	538	7.0	1.7	8.1	13.2	152	534		50	500
BT7LH-L0	620	7.0	1.7	8.1	13.2	178	534		50	500
BT8LH-L0	699	7.0	1.7	8.1	13.2	203	534		50	500
BT9LH-L0	780	7.0	1.7	8.1	13.2	229	534		50	500

# PANDUIT™ DOME-TOP™ Barb Ty Heat Stabilised Cable Ties (BT Series)

## DOME-TOP™ Barb Ty Cable Ties — Heat Stabilised



- Available in Miniature, Intermediate, Standard, and Light-Heavy cross section
- Bundle diameters up to 102mm
- Temperature rating: -40°C to 115°C

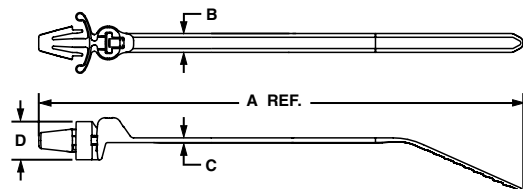


Part Number	Length A mm	Width B mm	Thickness C mm	Head Height D mm	Head Width E mm	Max. Bundle Dia. mm	Min. Loop Tensile Str. N	Recommended PANDUIT Installation Tool	Std. Pkg. Qty.	Std. Ctn. Qty.
<b>Miniature Cross Section</b>										
BT1M-M39	102	2.4	0.9	4.0	4.4	23	80	GTS, GS2B, PTS, PPTS, STS2	1000	50000
<b>Intermediate Cross Section</b>										
BT1.5I-M39	155	3.6	1.0	4.7	6.3	38	178	GTS, GS2B, PTS, PPTS, STS2	1000	25000
<b>Standard Cross Section</b>										
BT2S-M39	203	4.7	1.2	5.6	8.1	51	222	GTS, GTSL, GS2B, GS4H, PTS, PTH, PPTS, STS2, STH2	1000	10000
BT3S-M39	305	4.7	1.3	5.6	8.1	76	222		1000	10000
BT4S-M39	384	4.7	1.3	5.6	8.1	102	222		1000	5000
<b>Light-Heavy Cross Section (Straight Tip)</b>										
BT4LH-TL39	378	7.0	1.7	8.1	13.2	102	534	GTH, GS4H, GS4EH, PTH, STH2, ST2EH	250	2500

## DOME-TOP™ Barb Ty Wing Push Mount Cable Ties



Push mount ties are used to attach a cable bundle to a surface such as a flat panel. The anchor is easily pressed into a pre-drilled hole and locks in place. The wings provide constant tension when installed, creating a stable, secure fixture and rattle-free installation.



Part Number	Length A mm	Width B mm	Thickness C mm	Head Height D mm	Nominal Hole Dia. mm	Max. Panel Thickness mm	Max. Bundle Dia. mm	Min. Loop Tensile Str. N	Recommended PANDUIT Installation Tool	Std. Pkg. Qty.	Std. Ctn. Qty.
<b>Intermediate Cross Section</b>											
BW1.5I-D	168	3.6	1.0	7.1	4.7	2.4	38	178	GTS, GS2B, PTS, PPTS, STS2	500	5000
<b>Standard Cross Section</b>											
BW2S-D	216	4.7	1.3	9.4	6.4	4.0	51	222	GTS, GS2B, GTH, GS4H, PTS, PPTS, STS2, STH2	500	5000

## **NEW!** DOME-TOP™ Barb Ty Push Mount Cable Ties



- Combines cable tie, mount and fastener into a single part
- The anchor is pressed into a pre-formed hole to attach a bundle to a surface
- Wingless design allows tie to be used in confined spaces



Part Number	Length mm	Width mm	Nominal Hole Dia. mm	Max. Panel Thickness mm	Max. Bundle Dia. mm	Min. Loop Tensile Str. N	Std. Pkg. Qty.	Std. Ctn. Qty.
<b>Standard Cross Section</b>								
BP2S-D0	216	4.7	6.5	3.8	51	222	500	5000

# PANDUIT™ DOME-TOP™ Barb Ty Clamp Ties

## DOME-TOP™ Barb Ty Clamp Ties

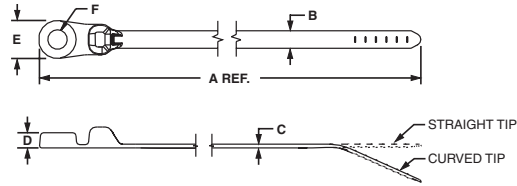


Side View

Front View



- Used to secure a bundle to another surface
- The design allows for bundling before or after screwing clamp in place
- Available in Miniature, Intermediate, Standard and Light-Heavy cross sections
- Bundle diameters up to 102mm



Part Number	Length A	Width B	Thickness C	Boss Height D	Boss Width E	Nominal Hole Dia. F	Screw Size	Max. Bundle Dia.	Min. Loop Tensile Str.	Recommended PANDUIT Installation Tool	Std. Pkg. Qty.	Std. Ctn. Qty.
	mm	mm	mm	mm	mm	mm		mm	mm			
<b>Miniature Cross Section</b>												
BC1M-S4-M	117	2.4	1.2	4.0	5.9	3.15	M2.5	23	80	GTS, GTSL, GS2B, PTS, PPTS, STS2	1000	50000
BC2M-S4-M	211	2.4	1.2	4.0	5.9	3.15	M2.5	51	80		1000	25000
<b>Intermediate Cross Section</b>												
BC1.5I-S8-M	168	3.6	1.0	4.2	8.4	4.57	M4	38	178	GTS, GTSL, GS2B, PTS, PPTS, STS2	1000	25000
<b>Standard Cross Section</b>												
BC2S-S10-C	216	4.7	1.3	4.1	10.2	5.2	M5	51	222	GTS, GTSL, GS2B, GTH, GS4H, PTS, PTH, PPTS, STS2, STH2	100	1000
BC3S-S10-D	318	4.7	1.3	4.1	10.2	5.2	M5	76	222		500	5000
BC4S-S10-C	396	4.7	1.3	4.1	10.2	5.2	M5	102	222		100	1000
<b>Light-Heavy Cross Section (Straight Tip)</b>												
BC4LH-S25-L	394	7.0	1.7	6.7	13.2	6.6	M6	102	534	GTH, GS4H, GS4EH, PTH, STH2, ST2EH	50	500

## DOME-TOP™ Barb Ty Clamp Ties — Weather Resistant



Side View

Front View



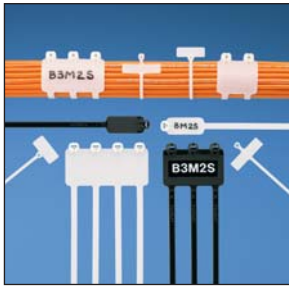
Except Light-Heavy Tie

- Used to secure a bundle to another surface
- The design allows for bundling before or after screwing clamp in place
- Available in Miniature, Intermediate, Standard and Light-Heavy cross sections
- Bundle diameters up to 102mm

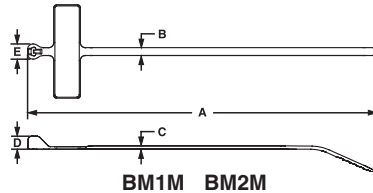
Part Number	Length A	Width B	Thickness C	Boss Height D	Boss Width E	Nominal Hole Dia. F	Metric Screw Size	Max. Bundle Dia.	Min. Loop Tensile Str.	Recommended PANDUIT Installation Tool	Std. Pkg. Qty.	Std. Ctn. Qty.
	mm	mm	mm	mm	mm	mm		mm	mm			
<b>Standard Cross Section</b>												
BC2S-S10-C0	216	4.7	1.3	4.1	10.2	5.2	M5	51	222	GTS, GS2B, GTH, GS4H, PTS, PPTS, STS2, STH2	100	1000
BC4S-S10-C0	396	4.7	1.3	4.1	10.2	5.2	M5	102	222		100	1000
<b>Light-Heavy Cross Section (Straight Tip)</b>												
BC4LH-S25-L0	394	7.0	1.7	6.7	13.2	6.6	M6	102	534	GTH, GS4H, GS4EH, PPTEH, STH2, ST2EH	50	500

# PANDUIT™ DOME-TOP™ Barb Ty Marker and Flag Ties (BM/BF Series)

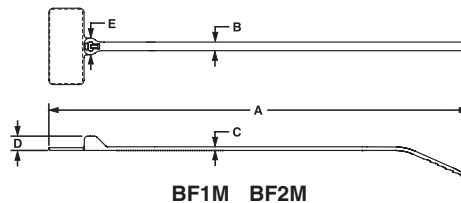
## DOME-TOP™ Barb Ty Marker & Flag Ties



- Used to fasten and identify bundles at the same time
- They can be marked with *PANDUIT* Marker Pens
- Available in Miniature and Standard cross section
- Bundle diameters up to 102mm
- Available in natural and weather resistant nylon

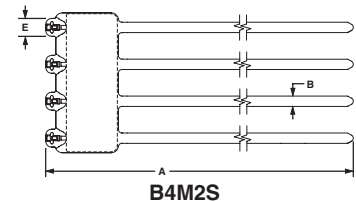
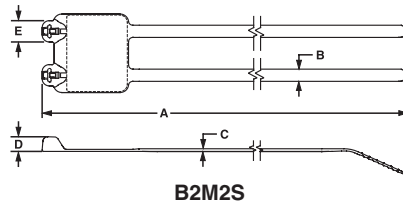
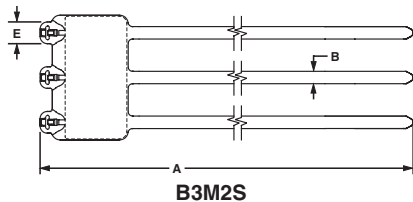
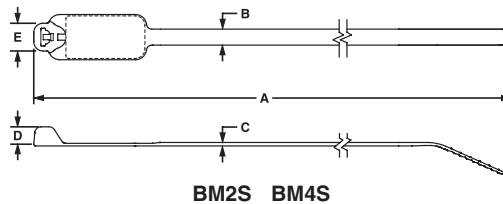


Part Number	Length A	Width B	Thickness C	Head Height D	Head Width E	Marker Write-On Area	Max. Bundle Dia.	Min. Loop Tensile Str. N	Recommended <i>PANDUIT</i> Installation Tool	Std. Pkg. Qty.	Std. Ctn. Qty.
	mm	mm	mm	mm	mm						
<b>Miniature Cross Section</b>											
<b>BM1M-C</b>	107	2.4	1.2	4.0	4.6	7.4 x 27.7	23	80	GTS, GTSL, GS2B, PTS, PPTS, STS2	100	1000
<b>BM2M-C</b>	201	2.4	1.2	4.0	4.6	7.4 x 27.7	51	80		100	1000



### Miniature Cross Section

<b>BF1M-C</b>	117	2.4	1.2	4.0	4.6	9.1 x 20.6	23	80	GTS, GTSL, GS2B, PTS, PPTS, STS2	100	1000
<b>BF2M-C</b>	211	2.4	1.2	4.0	4.6	9.1 x 20.6	51	80		100	1000



### Standard Cross Section

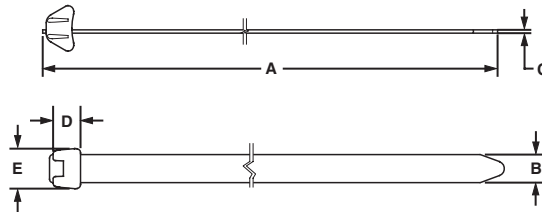
<b>BM2S-C</b>	203	4.7	1.2	5.6	8.1	12.4 x 23.1	51	222	GTS, GTSL, GS2B, GTH, GS4H, PTS, PTH, PPTS, STS2, STH2	100	1000
<b>BM4S-C</b>	384	4.7	1.3	5.6	8.1	12.7 x 54.1	102	222		100	1000
<b>B2M2S-D</b>	203	4.7	1.2	5.6	8.1	29.2 x 23.1	51	222	GTS, GTSL, GS2B, GTH, GS4H, PTS, PTH, PPTS, STS2, STH2	500	2500
<b>B3M2S-TL</b>	203	4.7	1.2	5.6	8.1	46.0 x 23.1	51	222		250	2500
<b>B4M2S-TL</b>	203	4.7	1.2	5.6	8.1	62.7 x 23.1	51	222		250	2500

Can be marked with *PANDUIT* Marker Pens or Computer Printable Labels.

## DURA-TY™ Weather Resistant Cable Ties



- Ideal for all outdoor messenger strand applications including telephone, cable TV, traffic signals and outside plant power services
- Weather Resistant Acetal strap body and head
- Double stainless steel, Type 302, locking barbs
- High tensile strength and high impact resistance
- Excellent chemical and moisture resistance
- 1112N. minimum loop tensile strength
- May be used with Stackable Aerial Cable Spacers SACS50-T100 (See page 104)



Part Number	Description	Length A	Strap Width B	Thickness C	Head Height D	Head Width E	Max. Bundle Dia. mm	Min. Loop Tensile Str. N	Recommended <i>PANDUIT</i> Installation Tool	Std. Pkg. Qty.	Std. Ctn. Qty.
		mm	mm	mm	mm	mm					
<b>Extra-Heavy Cross Section</b>											
DT4EH-L0	Cable Tie	343	12.7	1.5	12.4	18.2	98	1112	GTH, GS4EH, ST2EH	50	1000
DT8EH-Q0	Cable Tie	686	12.7	1.5	12.4	18.2	203	1112		25	500
DTRRH-LR0	15.24m reel of strapping	15,240	12.7	1.50	—	—	As needed	1112		1	20
DTHEH-Q0	Bag of 25 cable tie heads	—	—	—	12.45	18.2	—	—	—	25	500
DTKEH-0	Kit containing 15.24m reel of strapping and 25 cable tie heads	15,240	12.7	1.50	12.45	18.2	As needed	1112	GTH, GS4EH, ST2EH	1	20

## *DOME-TOP™* Barb Ty Cable Ties

### Part Number System (Example of BT1M-C)

<b>BT</b>	<b>1</b>	<b>M</b>	<b>—</b>	<b>C</b>
<b>Part Description</b>	<b>Size</b>	<b>Cross Section</b>	<b>Screw Hole Size</b>	<b>Package Size</b>
BT = Barb Ty	Approx.	M = Miniature	(Clamp Ties Only)	Q = 25
BC = Barb Ty Clamp	Maximum	I = Intermediate	-S4 = M2.5	L = 50
BF = Barb Ty Flag	Bundle	S = Standard	-S8 = M4	C = 100
BM = Barb Ty Marker	Dia. (In)	LH = Light-Heavy	-S10 = M5	TL = 250
BW = Barb Ty Wing		EH = Extra-Heavy	-S25 = M6	D = 500
DT = <i>DURA-TY™</i>				M = 1000
BP = Barb Ty Push Mt.				LR = 15.24m Reel
				<b>Colour</b>
				See chart below for colours and materials available

Material / Colour Chart					
Material - Colour	PANDUIT Suffix*	Mil Spec Suffix**	Material - Colour	PANDUIT Suffix*	Mil Spec Suffix**
Nylon 6.6 - Natural (See Note)	✓	.9	Nylon 6.6 - Blue	.6	.6
Weather Resistant Nylon 6.6 - Black	.0	.N/A	Nylon 6.6 - Purple	.7	.7
Nylon 6.6 - Brown	.1	.1	Nylon 6.6 - Grey	.8	.8
Nylon 6.6 - Red	.2	.2	Nylon 6.6 - White	.10	.N/A
Nylon 6.6 - Orange	.3	.3	Nylon 6.6 - Grey	.14	.N/A
Nylon 6.6 - Yellow	.4	.4	Nylon 6.6 - Black	.20	.N/A
Nylon 6.6 - Green	.5	.5	Heat Stabilised Nylon 6.6 - Black	.30	.N/A
			Heat Stabilised Nylon 6.6 - Natural	.39	.N/A

N/A = Not applicable to military specified parts

\* Note: ✓ denotes PANDUIT standard Natural Nylon 6.6 (no suffix required in part number)

\*\*Note: Mil. Spec. colour suffix per SAE AS33671 and AS33681 (formerly MS3367 and MS3368)

Standard Packaging			Bulk Packaging		
Part Number	Natural Nylon 6.6	Colour / Material Suffix	Part Number	Natural Nylon 6.6	Colour / Material Suffix
			BC1M-S4-M	✓	0
			BC2M-S4-M	✓	0
			BC1.5I-S8-M	✓	0
BC2S-S10-C	✓	0	BC2S-S10-D	✓	0
			BC3S-S10-D	✓	0
BC4S-S10-C	✓	0	BC4S-S10-D	✓	0,30
BC4LH-S25-L	✓	0	BC4LH-S25-TL	✓	0
BF1M-C	✓		BF1M-M	✓	0
BF2M-C	✓		BF2M-M	✓	0
BM1M-C	✓		BM1M-M	✓	0
BM2M-C	✓		BM2M-M	✓	0
BM2S-C	✓		BM2S-D	✓	0
BM4S-C	✓		BM4S-D	✓	0
BT1M-C	✓	0,30	BT1M-M	✓	0,1,2,3,4,5,6,7,8,10,30,39
BT1.5M-C	✓	0	BT1.5M-M	✓	0,30
BT2M-C	✓	0	BT2M-M	✓	0,2,3,4,5,6,8,30
BT4M-C	✓	0	BT4M-M	✓	0
BT1.5I-C	✓	0	BT1.5I-M	✓	0,1,2,3,4,5,6,7,8,10,30,39
BT2I-C	✓	0	BT2I-M	✓	0,30
BT3I-C	✓	0	BT3I-M	✓	0,30
BT4I-C	✓	0	BT4I-M	✓	0,14
BT2S-C	✓	0	BT2S-M	✓	0,1,2,3,4,5,6,7,8,10,20,30,39
BT3S-C	✓	0,2	BT3S-M	✓	0,30,39
BT4S-C	✓	0	BT4S-M	✓	0,2,3,4,5,6,7,8,10,30,39
BT2LH-L	✓	0	BT2LH-TL	✓	0
BT3LH-L	✓	0	BT3LH-TL	✓	0
BT4LH-L	✓	0	BT4LH-TL	✓	0,30,39
BT5LH-L	✓	0	BT5LH-C	✓	0
BT6LH-L	✓	0	BT6LH-C	✓	0
BT7LH-L	✓	0	BT7LH-C	✓	0
BT8LH-L	✓	0	BT8LH-C	✓	0
BT9LH-L	✓	0	BT9LH-C	✓	0
			BW1.5I-D	✓	
			BW2S-D	✓	0
			B2M2S-D	✓	0
			B3M2S-TL	✓	0
			B4M2S-TL	✓	0
^DTHEH-Q		0	BP2S-D	✓	0
^DTKEH		0			
^DTREH-LR		0			
^DT4EH-L		0			
^DT8EH-Q		0			

^ *DURA-TY™* Weather Resistant Acetal strap body and head

**CONTOUR-TY™ Cable Ties — Nylon 6.6 and Weather Resistant Nylon 6.6**



- Unique design prevents wire and cable damage
- Low profile head avoids snags and reduces overall bundle size
- Outside teeth and smooth round edges protect cable jacket - ideal for high vibration applications
- Parallel-entry limits exposure to sharp edges and protects workers' arms/hands
- Fully enclosed head for consistent strength
- Curved tip is easy to pick up from flat surfaces, allows faster initial threading, and speeds installation
- Materials
  - Natural Nylon 6.6 material — indoor use
  - Weather Resistant Nylon 6.6 (-0) material — outdoor use
  - Heat Stabilised (-39) material is for high temperature applications — indoor use
  - Flame Retardant (-69) material has a flammability rating of UL94V-0 — indoor use

Note: UL Recognized and UL Listed except CBR3S-M69



Part Number	Length A	Width B	Thickness C	Head Height D	Head Width E	Max. Bundle Dia.	Min. Loop Tensile Strength	Recommended PANDUIT Installation Tool	Std. Pkg. Qty.	Std. Ctn. Qty.
	mm	mm	mm	mm	mm	mm	N			
<b>Miniature Cross Section</b>										
CBR1M-M	104	2.5	1.0	5.3	5.0	25	80	GTS, GS2B, PTS, PPTS, STS2	1000	50000
CBR1M-M0	104	2.5	1.0	5.3	5.0	25	80		1000	50000
CBR1.5M-M	142	2.5	1.1	5.3	5.3	38	80		1000	50000
CBR1.5M-M0	142	2.5	1.1	5.3	5.3	38	80		1000	50000
CBR2M-M	183	2.5	1.1	5.3	5.3	51	80		1000	25000
CBR2M-M0	183	2.5	1.1	5.3	5.3	51	80		1000	25000
<b>Intermediate Cross Section</b>										
CBR1.5I-M	150	3.6	1.0	6.4	6.4	38	178	GTS, GS2B, PTS, PPTS, STS2	1000	25000
CBR1.5I-M0	150	3.6	1.0	6.4	6.4	38	178		1000	25000
CBR3I-M	264	3.6	1.3	6.4	6.7	76	178		1000	10000
CBR3I-M0	264	3.6	1.3	6.4	6.7	76	178		1000	10000
CBR4I-M	345	3.6	1.3	6.4	6.7	102	178		1000	10000
CBR4I-M0	345	3.6	1.3	6.4	6.7	102	178		1000	10000
<b>Standard Cross Section</b>										
CBR2S-M	193	4.8	1.1	7.1	8.4	51	222	GTS, GS2B, GTH, GS4H, PTS, PPTS, STS2, STH2	1000	10000
CBR2S-M0	193	4.8	1.1	7.1	8.4	51	222		1000	10000
CBR2S-M39	193	4.8	1.1	7.1	8.4	51	222		1000	10000
CBR3S-M	274	4.8	1.3	7.1	8.4	76	222		1000	5000
CBR3S-M0	274	4.8	1.3	7.1	8.4	76	222		1000	5000
CBR3S-M69	274	4.8	1.3	7.1	8.4	76	222		1000	5000
CBR4S-M	356	4.8	1.3	7.1	8.4	102	222		1000	5000
CBR4S-M0	356	4.8	1.3	7.1	8.4	102	222		1000	5000
<b>Heavy-Standard Cross Section</b>										
CBR2HS-D	203	6.4	1.4	8.2	9.9	51	378	GTH, GS4H, GS4EH, STH2, ST2EH	500	5000
CBR2HS-D0	203	6.4	1.4	8.2	9.9	51	378		500	5000
<b>Light-Heavy Cross Section</b>										
CBR4LH-TL	371	7.6	1.8	10.2	12.4	102	534	GTH, GS4H, GS4EH, PPTEH, STH2, ST2EH	250	2500
CBR4LH-TL0	371	7.6	1.8	10.2	12.4	102	534		250	2500
CBR6LH-C	531	7.6	1.8	10.2	12.4	152	534		100	2000
CBR6LH-C0	531	7.6	1.8	10.2	12.4	152	534		100	2000