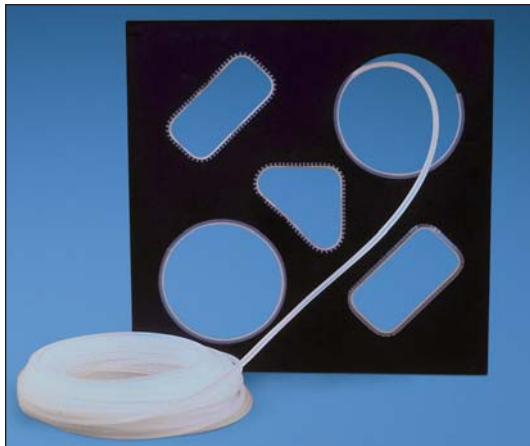
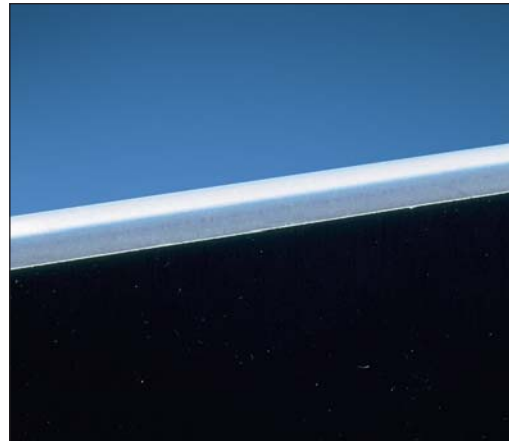


**Features**



- Nylon grommet edging strips conform to the Military Standard MS21266
- Slotted or solid wall construction
- Available with pressure sensitive adhesive
- No liner to remove from adhesive

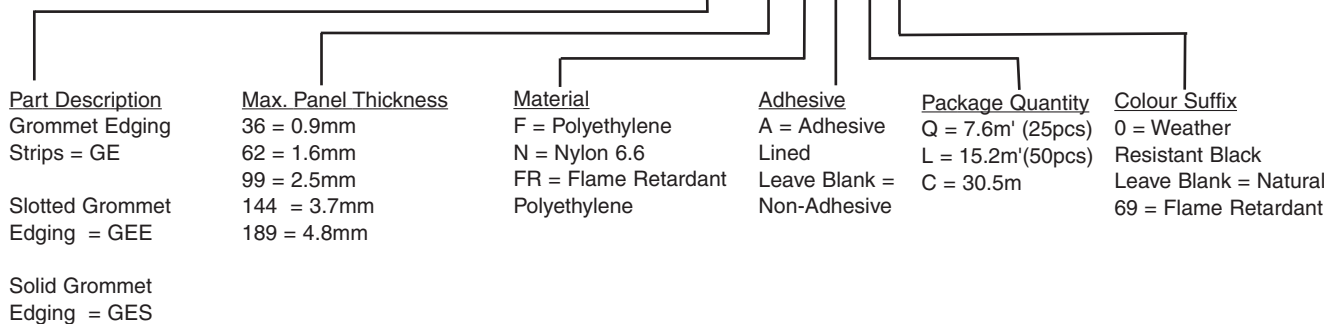
**Suggested Applications**



- Use the solid wall product on straight edges
- Use to prevent abrasion against the sharp edges of panel walls and knockouts

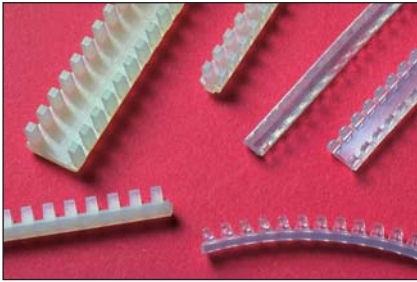
**The Functional Part Number System Makes Ordering Easy**  
**Grommet Edging Part Number Description**

**Example: GEE 36 F-A-C 0**



Protects wires and cables from sharp edges

**Choose from five materials:**



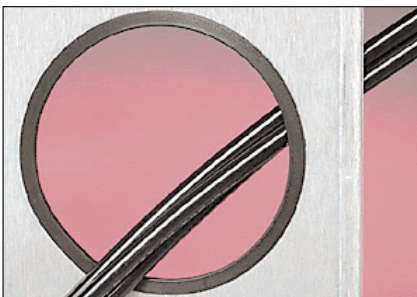
**Nylon 6.6**

- Self extinguishing
- For indoor use up to 65°C
- Available with slotted wall only



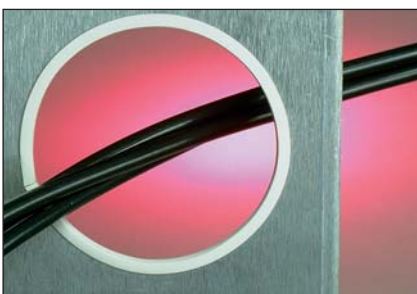
**Polyethylene**

- General purpose material for indoor use up to 50°C
- Style GEE and GES provided in .8mm thick material, makes them highly flexible
- Available with slotted or solid wall construction



**Weather Resistant Polyethylene**

- For outdoor use up to 50°C
- Excellent resistance to ultra-violet light



**Flame Retardant Polyethylene**

- For indoor use up to 60°C
- Will not support a flame
- Available with slotted or solid wall construction



**Adhesive Lined Polyethylene**

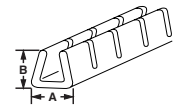
- Base is lined with a pressure sensitive adhesive
- Available in natural and weather resistant
- Adhesive ensures that the product will stay where it is installed

Adhesive Lined

Part Number	Material	Colour	Panel Thickness mm	Dimensions mm		Per Roll m	Std. Pkg. Qty.*
				A	B		
GEE36F-C	Continuous Polyethylene (Slotted Wall)	Natural	0.7 - 0.9	2.7	3.0	30.5	1 Reel
GEE36F-C0		Black	0.7 - 0.9	2.7	3.0	30.5	1 Reel
GEE62F-C		Natural	0.9 - 1.6	3.3	4.1	30.5	1 Reel
GEE62F-C0		Black	0.9 - 1.6	3.3	4.1	30.5	1 Reel
GEE99F-C		Natural	1.6 - 2.5	4.3	4.7	30.5	1 Reel
GEE99F-C0		Black	1.6 - 2.5	4.3	4.7	30.5	1 Reel
GEE144F-C		Natural	2.5 - 3.7	5.4	5.6	30.5	1 Reel
GEE144F-C0		Black	2.5 - 3.7	5.6	5.6	30.5	1 Reel
GES36F-C	Continuous Polyethylene (Solid Wall)	Natural	0.7 - 0.9	2.7	3.0	30.5	1 Reel
GES36F-C0		Black	0.7 - 0.9	2.7	3.0	30.5	1 Reel
GES62F-C		Natural	0.9 - 1.6	3.3	4.1	30.5	1 Reel
GES62F-C0		Black	0.9 - 1.6	3.3	4.1	30.5	1 Reel
GES99F-C		Natural	1.6 - 2.5	4.3	4.7	30.5	1 Reel
GES99F-C0		Black	1.6 - 2.5	4.3	4.7	30.5	1 Reel
GES144F-C		Natural	2.5 - 3.7	5.4	5.6	30.5	1 Reel
GES144F-C0		Black	2.5 - 3.7	5.4	5.6	30.5	1 Reel
GES189F-C	Natural	3.7 - 4.8	7.6	7.7	30.5	1 Reel	
GES189F-C0	Black	3.7 - 4.8	7.6	7.7	30.5	1 Reel	
GEE62F-A-C	Continuous Polyethylene With ADHESIVE (Slotted Wall)	Natural	0.9 - 1.6	3.3	4.1	30.5	1 Reel
GEE62F-A-C0		Black	0.9 - 1.6	3.3	4.1	30.5	1 Reel
GEE99F-A-C		Natural	1.6 - 2.5	4.3	4.7	30.5	1 Reel
GEE99F-A-C0		Black	1.6 - 2.5	4.3	4.7	30.5	1 Reel
GEE144F-A-C	Continuous Polyethylene With ADHESIVE (Solid Wall)	Natural	2.5 - 3.7	5.4	5.6	30.5	1 Reel
GEE144F-A-C0		Black	2.5 - 3.7	5.4	5.6	30.5	1 Reel
GES62F-A-C		Natural	0.9 - 1.6	3.3	4.1	30.5	1 Reel
GES62F-A-C0		Black	0.9 - 1.6	3.3	4.1	30.5	1 Reel
GES99F-A-C	Continuous Polyethylene With ADHESIVE (Solid Wall)	Natural	1.6 - 2.5	4.3	4.7	30.5	1 Reel
GES99F-A-C0		Black	1.6 - 2.5	4.3	4.7	30.5	1 Reel
GES144F-A-C		Natural	2.5 - 3.7	5.4	5.6	30.5	1 Reel
GES144F-A-C0		Black	2.5 - 3.7	5.4	5.6	30.5	1 Reel
GEE36FR-C	Flame Retardant Polyethylene (Slotted Wall)	Natural	0.7 - 0.9	2.7	3.0	30.5	1 Reel
GEE62FR-C		Natural	0.9 - 1.6	3.3	4.1	30.5	1 Reel
GEE99FR-C		Natural	1.6 - 2.5	4.3	3.9	30.5	1 Reel
GEE144FR-C		Natural	2.5 - 3.7	5.4	5.9	30.5	1 Reel
GES36FR-C	Flame Retardant Polyethylene (Solid Wall)	Natural	0.7 - 0.9	2.7	3.0	30.5	1 Reel
GES62FR-C		Natural	0.9 - 1.6	3.3	4.1	30.5	1 Reel
GES99FR-C		Natural	1.6 - 2.5	4.3	3.9	30.5	1 Reel
GES144FR-C		Natural	2.5 - 3.7	5.4	5.9	30.5	1 Reel
GEE47N-C	Continuous Nylon 6.6 (Slotted Wall)	Natural	1.0 - 1.4	3.3	3.5	30.5	1 Reel
GEE55N-C		Natural	1.2 - 1.6	3.4	3.5	30.5	1 Reel
GEE71N-C		Natural	1.6 - 2.0	3.8	3.5	30.5	1 Reel
GEE98N-C		Natural	2.3 - 2.7	4.6	4.5	30.5	1 Reel
GEE134N-C	Natural	3.2 - 3.6	5.3	3.5	30.5	1 Reel	

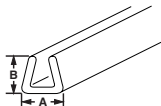
\*Order the number of pieces required in multiples of standard package quantities.

**Polyethylene**



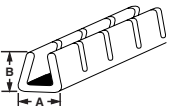
Style **GEE**  
Slotted Wall  
Continuous  
(30.5m) Reels

**Polyethylene**



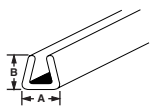
Style **GES**  
Solid Wall  
Continuous  
(30.5m) Reels

**Adhesive Lined Polyethylene**



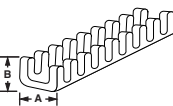
Style **GEE-A**  
Slotted Wall  
Continuous  
(30.5m) Reels

**Adhesive Lined Polyethylene**



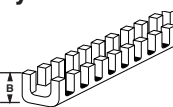
Style **GES-A**  
Solid Wall  
Continuous  
(30.5m) Reels

**Nylon 6.6**



Continuous  
(30.5m) Reels  
Style **GEE**  
Slotted Wall

**Nylon 6.6**

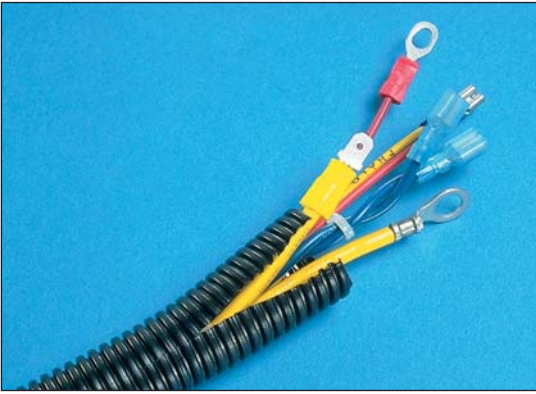


Style **GE**  
Slotted Wall  
12 19.0mm strips

Part Number	Material	Colour	Panel Thickness mm	Dimensions — mm		Pieces Per Pkg.	Std. Pkg. Qty.*
				A	B		
GE52-C	Military Standard MS21266 323.85mm Nylon 6.6 Strips (-69 designates Flame Retardant)	Natural	0.4 - 1.3	3.8	3.9	100	Strips
GE52-C69**		Natural	0.4 - 1.3	3.8	3.9	100	Strips
GE85-C		Natural	1.3 - 2.2	4.5	3.9	100	Strips
GE85-C69**		Natural	1.3 - 2.2	4.5	3.9	100	Strips
GE128-C		Natural	2.2 - 3.3	5.6	3.9	100	Strips
GE128-C69**		Natural	2.2 - 3.3	5.6	3.9	100	Strips
GE192-L		Natural	3.3 - 4.9	8.3	5.8	50	Strips
GE192-L69**		Natural	3.3 - 4.9	8.3	5.8	50	Strips
GE255-L		Natural	4.9 - 6.5	9.8	6.1	50	Strips
GE318-L		Natural	6.5 - 8.1	11.3	6.5	50	Strips
GE380-Q		Natural	8.1 - 9.7	13.1	6.5	25	Strips
GE510-Q		Natural	9.7 - 13.0	16.3	6.5	25	Strips

\*Order the number of pieces required in multiples of standard package quantities.

\*\*This material is not listed under Military Standard MS21266.

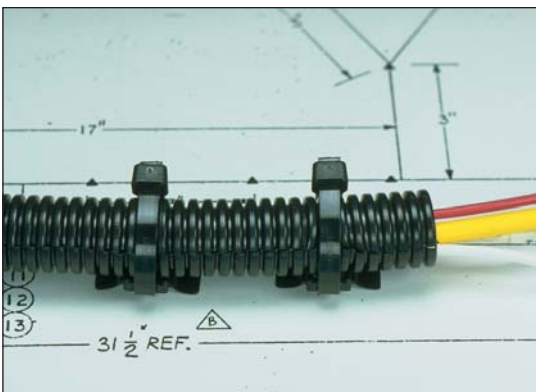


- *PANDUIT* Corrugated Loom Tubing is offered for applications where spiral wrap or braided expandable sleeving may be difficult to install or where they do not offer the amount of protection required
- Available in Heat Stabilized Nylon or Polyethylene, this product available with a lengthwise slit which makes it easy to install onto a bundle of wires or a pre-assembled harness assembly



### Features and Benefits

- Protects and reduces the risk of damage to wiring
- Crush, impact and abrasion resistant
- Available in slit or solid wall
- Available in easy to handle 30.5 metre lengths
- Available in black, orange and yellow polyethylene and black heat stabilized nylon
- Secure with push type cable ties, adhesive or push type mounts



### Suggested Applications

- Bundle wires in control panels
- Contain and organize loose and bundled wiring harnesses
- Route wires in automotive, truck, trailer, bus, conversion van, emergency service and recreational vehicle applications
- Protect wires in off road/mobile equipment
- Use in mining equipment
- Marine applications for protecting wires on boats and ships

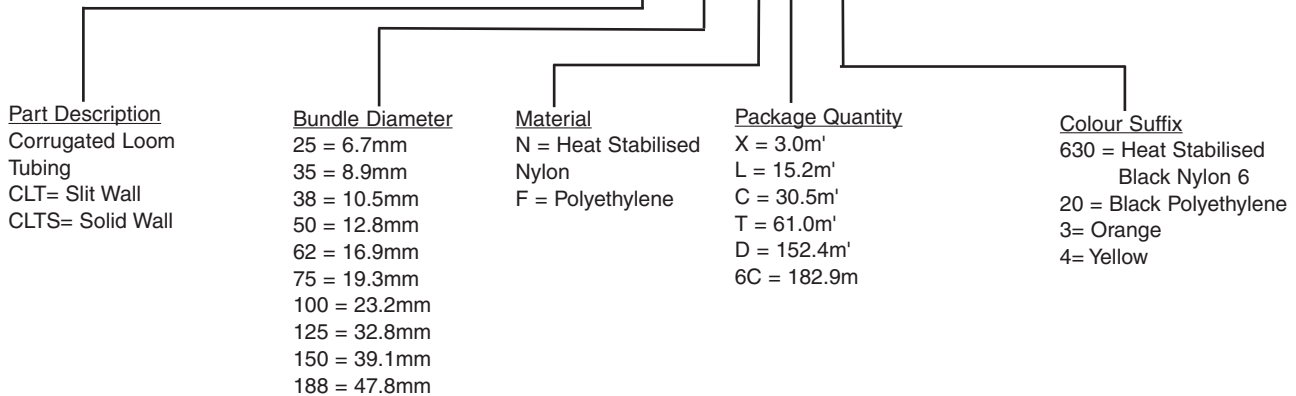


### Wiring Accessories for Corrugated Loom Tubing

- Tie Harness Mounts have a specially designed location tab on the mount that aligns with grooves in corrugated loom tubing to ensure proper mount location during assembly

**The Functional Part Number System Makes Ordering Easy**  
**Corrugated Loom Tubing Part Number Description**

**Example: CLT 100 N-C 630**



Part Number		Material	Colour	Inside Diameter mm	Outside Diameter mm	Length m	Std. Pkg. Qty.*		
Slit	Solid								
CLT25F-C20	CLTS25F-C20	Polyethylene	Black	6.7	9.9	30.5	1		
CLT35F-C20	CLTS35F-C20			8.9	12.7	30.5	1		
CLT38F-C20	CLTS38F-C20			10.5	14.2	30.5	1		
CLT50F-C20	CLTS50F-C20			12.8	17.0	30.5	1		
CLT62F-C20	CLTS62F-C20			16.9	21.1	30.5	1		
CLT75F-C20	CLTS75F-C20			19.3	23.8	30.5	1		
CLT100F-C20	CLTS100F-C20			23.2	27.7	30.5	1		
CLT125F-L20	CLTS125F-L20			32.8	38.1	15.2	1		
CLT150F-X20	**			39.1	47.2	3.0	1		
CLT150F-T20	**			39.1	47.2	61.0	1		
CLT150F-D20	CLTS150F-D20			39.1	47.2	152.4	1		
CLT188F-X20	**			47.8	55.1	3.0	1		
CLT188F-C20	**			47.8	55.1	30.5	1		
CLT188F-6C20	**			47.8	55.1	182.9	1		
CLT25F-C3	CLTS25F-C3			Polyethylene	Orange	6.7	9.9	30.5	1
CLT35F-C3	CLTS35F-C3	8.9	12.7			30.5	1		
CLT38F-C3	CLTS38F-C3	10.5	14.2			30.5	1		
CLT50F-C3	CLTS50F-C3	12.8	17.0			30.5	1		
CLT62F-C3	CLTS62F-C3	16.9	21.1			30.5	1		
CLT75F-C3	CLTS75F-C3	19.3	23.8			30.5	1		
CLT100F-C3	CLTS100F-C3	23.2	27.7			30.5	1		
CLT125F-L3	CLTS125F-L3	32.8	38.1			15.2	1		
CLT150F-X3	**	39.1	47.2			3.0	1		
CLT150F-D3	CLTS150F-D3	39.1	47.2			152.4	1		
CLT188F-X3	**	47.8	55.1			3.0	1		
CLT188F-C3	**	47.8	55.1			30.5	1		
CLT150F-X4	**	Polyethylene	Yellow			39.1	47.2	3.0	1
CLT150F-D4	**					39.1	47.2	152.4	1
CLT188F-X4	**					47.8	55.1	3.0	1
CLT188F-C4	**			47.8	55.1	30.5	1		
CLT25N-C630	CLTS25N-C	Heat Stabilised Black Nylon 6	Black	6.7	9.9	30.5	1		
CLT35N-C630	CLTS35N-C			8.9	12.7	30.5	1		
CLT38N-C630	CLTS38N-C			10.5	14.2	30.5	1		
CLT50N-C630	CLTS50N-C			12.8	17.0	30.5	1		
CLT62N-C630	CLTS62N-C			16.9	21.1	30.5	1		
CLT75N-C630	CLTS75N-C			19.3	23.8	30.5	1		
CLT100N-C630	CLTS100N-C			23.2	27.7	30.5	1		
CLT125N-L630	**			32.8	38.1	15.2	1		
CLT150N-D630	**			39.1	47.2	152.4	1		
CLT188N-6C630	**			47.8	55.1	182.9	1		

\*Order the number of pieces required in multiples of standard package quantities.

**WITH**  
PANDUIT Fittings



**WITHOUT**  
PANDUIT Fittings

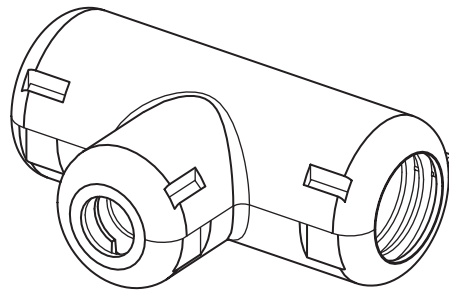
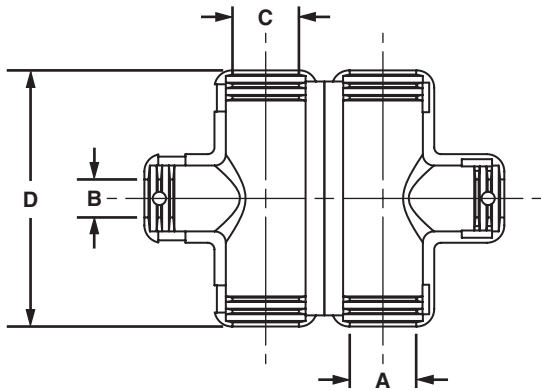


**Features:**

- Fast assembly . . . . .
- Virtually eliminates taping . . . . .
- Easy to assemble . . . . .
- Locking latch design . . . . .
- Durable polypropylene shell . . . . .
- Works with most popular sizes . . . . .

**Benefits**

- .Reduces production time
- .Improves system appearance
- .Reduces operator fatigue
- .Secures fittings firmly in place
- .Protects wires
- .Provides easy selection of
- .Corrugated Loom Tubing fittings for
- .application needs



Part Number	Dimensions mm				Material	Colour	Packaging*	
	A	B	C	D			Std. Pkg. Qty.*	Std. Ctn. Qty.
CF382538F-Q	9.5	6.4	9.5	52.3	Polypropylene	Black	25	100
CF502550F-Q	12.7		12.7	58.4				
CF503850F-Q	19.1	9.5	19.1	77.7				
CF752575F-Q		6.4						
CF753875F-Q		9.4						

\*Order the number of pieces required in multiples of standard package quantities.