

# TWINOP

## Environmental Weatherproof Optical Connectors

MAIN CHARACTERISTICS



### Technical description

- Fibers : 50/125, 62,5/125 and 9/125
- Channels 2 (other arrangements contact us)
- Plug adapted to tight jacketed multiway cables
- Typical insertion loss :
  - Singlemode / Multimode fiber : 0,5 dB
- Maximum return loss :
  - Singlemode fiber : PC - 30 dB
  - UPC - 45 dB
  - APC - 55 dB
- Cable retention by crimping > 100 daN
- Durability : 200 mating/unmating cycles (change for <0.2dB)
- Operating temperature : -40°C, +70°C
- Termini : zirconium PC ferrule (Ø 2.5 mm)
- Waterproof IP 64 when mated connectors
- Materials : die cast, nickel plated
- Screw locking mechanism
- Return springs assuring the physical contact of the optical faces

# 973 Series

The Amphenol TWINOP is a screw locking waterproof (IP 64) 2 channels singlemode or multimode optical connector.

This product uses the proven TWINAX shells, and the standard termini (Ø 2.5 mm) which is designed to provide a high reliability performance and economical cost for outside telecom applications.

### Applications

- Outside telecom network, Links Base Station
- UMTS, LMDS, FTTH
- Video
- CATV
- Railway
- Industrial
- Military
- Navy

**Amphenol**  
Socapex  
Fibre Optic Business Division

Amphenol Socapex Promenade de l'Arve -B.P.29 - 74311 THYEZ - FRANCE - Tel. :33 (0) 4 50 89 28 00 - Fax : 33 (0) 4 50 89 28 23

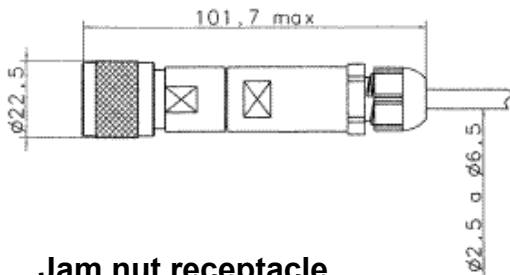
Specifications are subject to change without notice. All statements, information and data system given herein are believed to be accurate and reliable but are presented without guaranty. No reproduction without agreement. TWINOP. February 2002. Printed in France by Amphenol Socapex.

# TWINOP

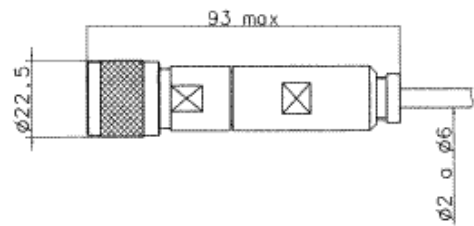
# 973 Series

## Line Drawings (dimensions in mm)

**Standard PG Plug**

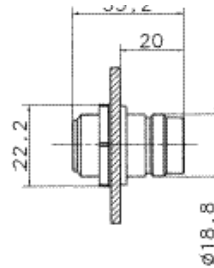
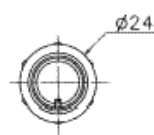


**Integrated PG Plug**

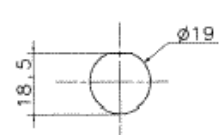


**Jam nut receptacle**

Front mount



Panel Cut out



## How to order :

<b>Series :</b>	<b>TWOP</b>	<b>06P</b>	<b>F</b>	<b>S3</b>	<b>2</b>	<b>P7</b>	<b>X058</b>
<b>Shell Type</b>	<b>Contact type</b>						
<b>06</b> : Straight plug	<b>P</b> : Pin						
<b>07</b> : Jam nut receptacle	<b>S</b> : Socket						
<b>Shell finish</b>							
F : Electroless nickel plated							
<b>Backshell</b>							
<b>H0</b> : Heat-shrink right angle backshell w without PG clamp							
<b>N0</b> : Without backshell (only for receptacle)							
<b>S</b> : Straight backshell for multi-fiber cable							
<b>1</b> : Standard metal PG clamp							
<b>2</b> : Standard plastic PG clamp							
<b>3</b> : Integrated metal PG clamp							
<b>4</b> : Integrated plastic PG clamp							
<b>Number of channels</b>							
<b>Type of ceramic ferrule</b>							
<b>P</b> : PC ferrule							
<b>A</b> : APC ferrule (only for singlemode fiber)							
<b>Ceramic ferrule inner diametre</b>							
<b>5</b> : $\phi$ 125 $\mu$ m } singlemode fiber							
<b>6</b> : $\phi$ 126 $\mu$ m }							
<b>7</b> : $\phi$ 127 $\mu$ m (only for multimode fiber)							
<b>Cable diametre</b>							
<b>X016</b> : 1,6mm (only for receptacle)							
<b>X020</b> : 2,0mm (only for receptacle)							
<b>X058</b> : 5,8mm (only for plug)							
<b>XXXX</b> : cable defined by the customer							

## Requested information to order a TWINOP patchcord :

<i>Plug or receptacle</i>	: define the P/N
<i>Type of fiber</i>	: 50/125, 62,5/125 or 9/125
<i>Patchcord length</i>	: ex : 10,5m
<i>Patchcord configuration</i>	: plug/plug, plug/pigtail, plug/receptacle, receptacle/pigtail, receptacle/receptacle
<i>Drawing</i>	: description of the product



Amphenol Socapex Promenade de l'Arve - B.P.29 - 74311 THYEZ - FRANCE - Tel. :33 (0) 4 50 89 28 00 - Fax : 33 (0) 4 50 89 28 23

Specifications are subject to change without notice. All statements, information and data system given herein are believed to be accurate and reliable but are presented without warranty. No reproduction without agreement. TWINOP. February 2002. Printed in France by Amphenol Socapex.